

The rivers and estuaries of east Suffolk provide a varied experience for birdwatching, sailing, fishing, walking and cycling, and using the historic foot ferries makes these experiences unique.

Cycle Routes: All foot ferries carry bicycles, and routes to/from them are suitable for all abilities.

Walk Routes: There are numerous walks that make the most of using the foot ferries.

Please use the relevant Ordnance Survey Map of your chosen area or guides available from Coast & Heaths AONB or Discover Suffolk.



For a selection of free to download walking and cycling guides please see:

www.suffolkcoastandheaths.org

01394 445225



Your online guide to discovering Suffolk's countryside



We are lucky to have four historic foot ferries that serve as links for the Suffolk Coast Path and Cycle Route and continue to offer a valuable service.



Butley Ferry is thought to date back to the 16th century, making it one of the oldest routes in the UK. The harbour ferry for Shotley, Harwich and Felixstowe (begun 1912) is going from strength to strength with an increased capacity boat.

Walberswick and Bawdsey might, 100-years ago, have had chain link ferries, but Walberswick is now a rowed route (and does river cruises on the Blyth) and at Bawdsey you hail the ferry with a giant paddle to cross the Deben.

Enjoy your visit to the Coast & Heaths Area of Outstanding Natural Beauty (AONB)!

With special thanks to local artist, Claudia Myatt, for the use of her fabulous paintings www.claudiamyatt.co.uk



Suffolk Coast Foot Ferries



Walberswick Ferry

Crossing the Blyth estuary between Southwold & Walberswick

Butley Ferry

Crossing the Butley River (tributary of Alde & Ore)

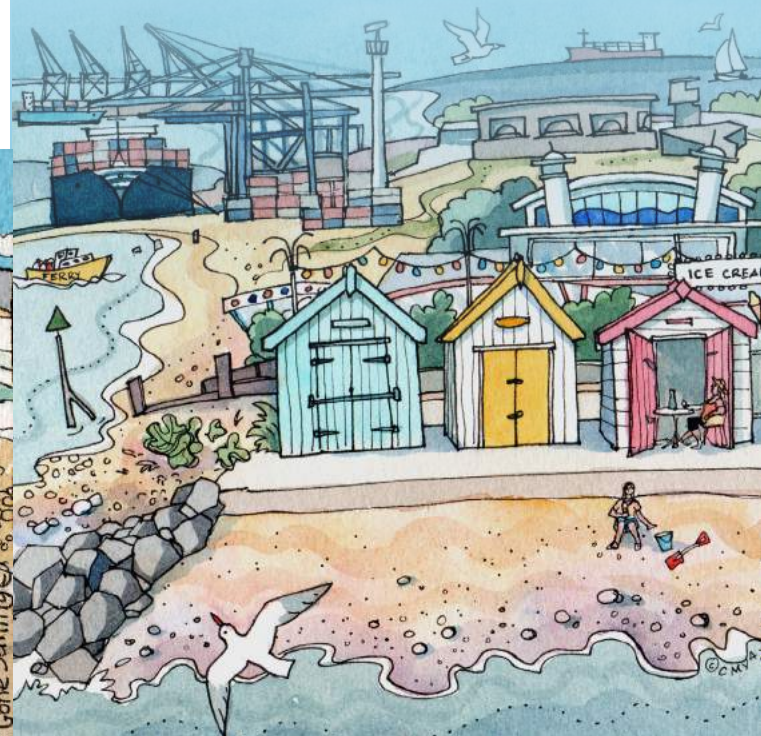
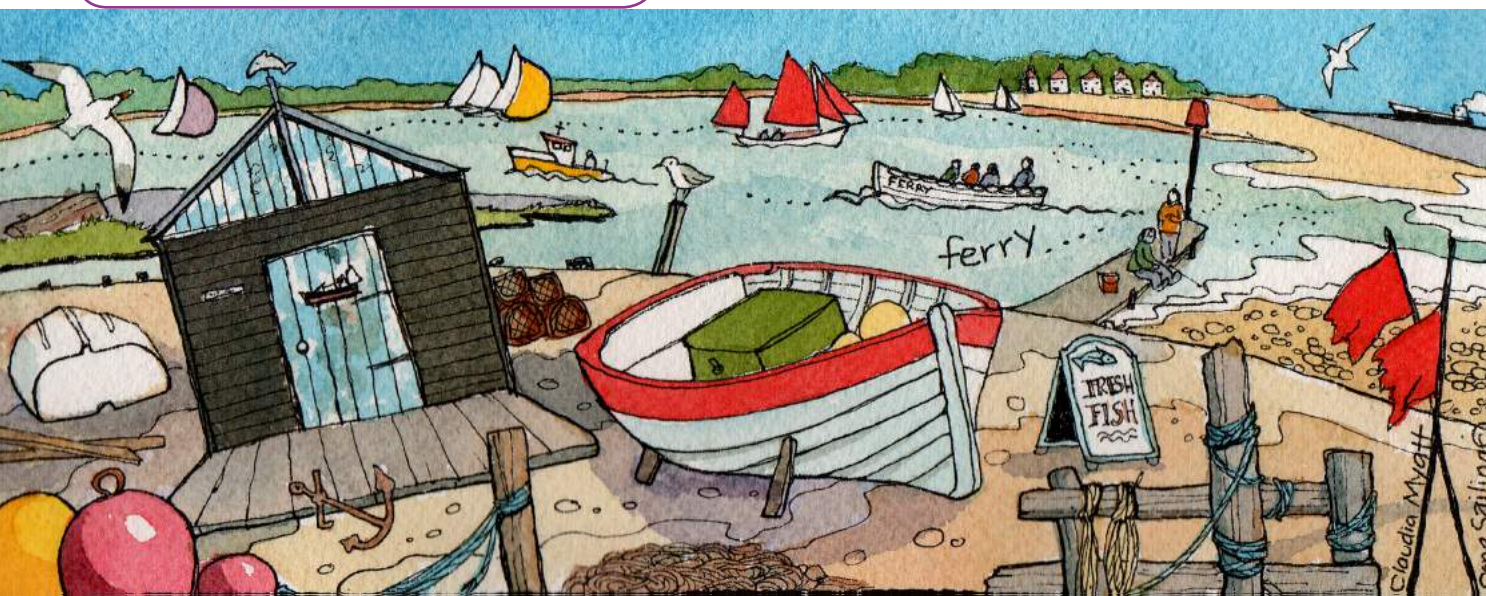
Bawdsey Ferry

Crossing the Deben estuary between Bawdsey & Felixstowe Ferry

Harwich Ferry

Crossing the Stour and Orwell estuaries between Felixstowe, Shotley & Harwich

The Four Foot Ferries of the Coast & Heaths are a great way to enjoy Suffolk's outstanding coast & estuaries



Walberswick to Southwold

Wa



Operates daily from 1st April to 29th October, 10am to 5pm.

Operates weekends only from 30th October - New Year's Day, 11am to 3pm.

One hour motorboat trips up into the Blyth Estuary available, please see our website for more information.

W: walberswickferry.com

E: walberswickferry@gmail.com

Walk Suggestion:
Walk to Southwold town and pier, or south to Dunwich.

Cash only, no card payment option available.

2023 Prices:

Adults & Children	£2
Children	£1
Under 5's	Free
Bicycles	£2
Dogs free and welcome!	

Details of running days, times and prices are correct as of March 2023.

The information in this leaflet is provided in good faith, but the Coast & Heaths AONB takes no responsibility for the services provided. All ferries operate weather permitting.

Butley Bu

Operates Easter Saturday to second Sunday in October, weekends and Bank Holidays only, 11am to 4pm.

T: 07913 672499 (during ferry opening hours)

W: www.butleyferry.org

Walk Suggestion:

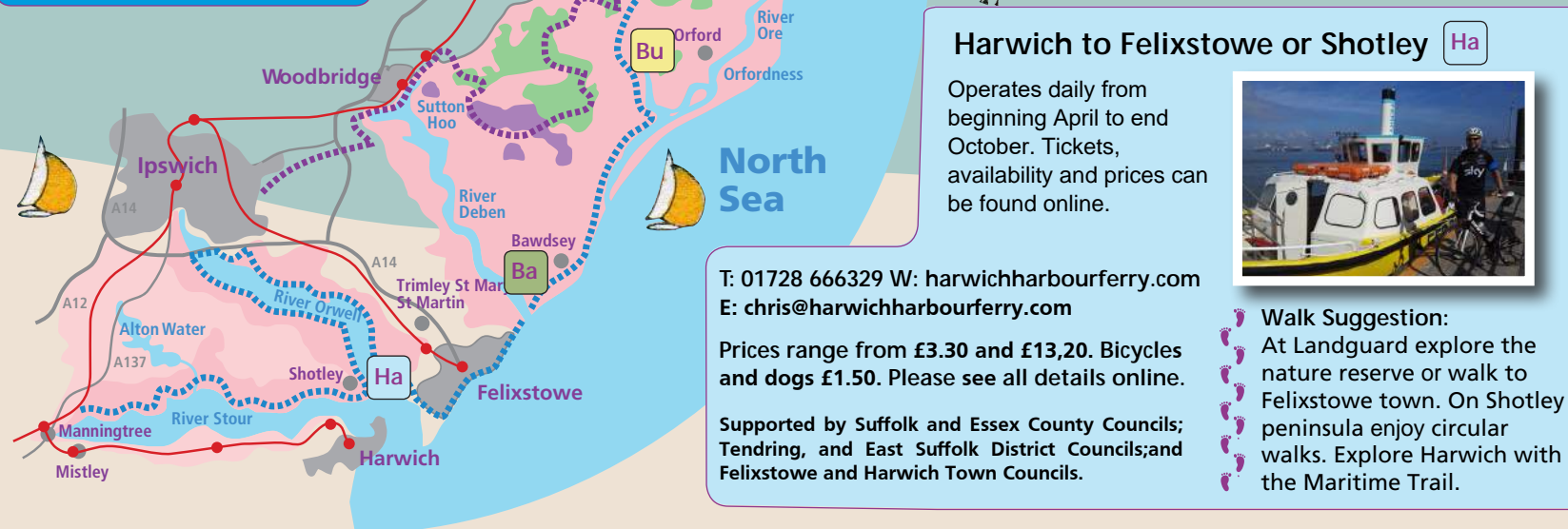
Walk north to Orford, south to Hollesley or Shingle Street, or circular walk to Chillesford.

2023 Prices:

Adults:	£2.50
Children (under 12):	£1.50
Bicycles:	£1.50
Dogs free and welcome!	

Woodbridge to Sutton Hoo

The National Trust and Woodbridge Town Council are investigating the possibility of a future ferry service connecting Woodbridge with Sutton Hoo. Look out for updates.



Bawdsey to Felixstowe Ferry Quay

Ba



Operates weekends only from Good Friday to 30th April, 10am to 5pm

Operates daily from 1st May to 30th September, 10am to 5pm.

Run by Felixstowe Ferry Boatyard Ltd

W: www.visitfelixstowe.org.uk

Walk Suggestion:

Walk along the river banks, or south to Felixstowe and Landguard National Nature Reserve, or walk north on the Suffolk Coast Path.

Cash only, no card payment option available

2023 Prices:

Adult Single:	£3
Adult Return:	£5
Children:	£2
Cyclist Single:	£4
Cyclist Return:	£6
River taxi to boats, each way:	£3
Dogs free and welcome!	

Harwich to Felixstowe or Shotley Ha

Operates daily from beginning April to end October. Tickets, availability and prices can be found online.



T: 01728 666329 W: harwichharbourferry.com

E: chris@harwichharbourferry.com

Prices range from £3.30 and £13.20. Bicycles and dogs £1.50. Please see all details online.

Supported by Suffolk and Essex County Councils; Tendring, and East Suffolk District Councils; and Felixstowe and Harwich Town Councils.

Walk Suggestion:
At Landguard explore the nature reserve or walk to Felixstowe town. On Shotley peninsula enjoy circular walks. Explore Harwich with the Maritime Trail.